



2026
PREP AND REC GRAND NATIONALS
SPECTATOR INFORMATION PACKET



April 25-26, 2026
Universal Orlando Resort
6000 Universal Boulevard, Orlando, Florida 32819

Welcome!

Prep and Rec Grand Nationals is a bid invitation cheerleading and dance end of season event exclusively for Prep and Rec teams! This event is held inside Universal Orlando Resort theme parks in Orlando, Florida, April 25-26, 2026!

This Spectator Information packet includes important information about the event, including information how to book a lodging package and how to spectator entry packages.

TABLE OF CONTENTS

SECTION 1 - [General Information](#)

SECTION 2 - [Lodging Packages](#)

SECTION 3 - [Spectator Entry Packages](#)

SECTION 4 - [Package Pick Up Instructions](#)

SECTION 5 - [Important Deadlines](#)

SECTION 6 - [Frequently Asked Questions](#)

SECTION 7 - [Helpful Links and Information](#)

SECTION 8 - [Terms and Conditions](#)



[CLICK HERE TO SEND A MESSAGE](#)



openchampionshipseries.com



Universal Orlando Resort
6000 Universal Boulevard, Orlando, Florida 32819

GENERAL INFORMATION

Compete and Play in the Parks at Universal Orlando Resort™ at Prep and Rec Grand Nationals, April 25-26, 2026!

Important Information:

Dates: April 25-26, 2026

Location: Universal Orlando Resort, 6000 Universal Boulevard, Orlando, Florida 32819

Athletes can win Paid and Partial Paid bids to Prep and Rec Grand Nationals at participating Open Qualifier events! Paid and Partial Paid bids reduce the price of registration.

Athlete and coach team registration for the event includes a five day, 3-park-to-park ticket to access to Universal's Islands of Adventure™, Universal Studios Florida™, and Universal Volcano Bay™ water theme park on the same day. Park tickets are valid from April 21-30, 2026. All athletes and coaches have the option to upgrade their tickets to include Universal Epic Universe.

All spectators who have not booked an Open Lodging Package must purchase a Spectator Entry Package directly through the Open Championship Series. This package includes both park admission and access to the competition. Entry to the competition is not permitted without a Spectator Entry Package. Please note: spectator entry into the competition venue cannot be purchased separately.

Learn more about Universal Orlando Resort! [CLICK HERE](#)

Universal Orlando Resort conditions of entry and prohibited items policy: [CLICK HERE](#)

Universal Orlando Resort Locker Rentals Policy: [CLICK HERE](#)



[CLICK HERE TO SEND A MESSAGE](#)



openchampionshipseries.com



Universal Orlando Resort
6000 Universal Boulevard, Orlando, Florida 32819

LODGING PACKAGES AND INFORMATION

Stay on a Discounted Lodging Package through the Open Championship Series and stay at Universal Orlando Resort hotels and receive the following benefits:

- 3-night minimum hotel stay included in package pricing
- Hotel packages include park tickets with an option to upgrade to Universal Epic Universe:
 - **Lodging package with ticket package (including Epic Universe)** - Enjoy 5 days to move freely between Universal Studios Florida, Universal Islands of Adventure, Universal Volcano Bay AND Universal Epic Universe. The 5-Day Park-to-Park WITH Volcano Bay Youth Ticket entitles one (1) guest admission to Universal Studios Florida, Universal Islands of Adventure, Universal Epic Universe, AND Universal Volcano Bay theme parks on any five (5) calendar days.
 - **Lodging Package with standard park ticket package (without Epic Universe)** - Enjoy 5 days to move freely between Universal Studios Florida, Universal Islands of Adventure and Universal Volcano Bay. The 5 Day Park Ticket entitles one (1) guest admission to Universal Studios Florida, Universal Islands of Adventure, AND Universal Volcano Bay theme parks on any five (5) separate calendar days.
- Ticket is valid over a ten (10) consecutive calendar day period (APRIL 21-30, 2026). The ticket will expire in full on the expiration date printed on ticket. Unused days shall be forfeited.
- Includes 2-Day Event Spectator Wristband for all spectators

A minimum stay of three nights is required

*All occupants ages 3 and up must be listed on reservations (including athletes)

[CLICK HERE](#) to Book a Lodging Reservation!

Hint: Watch the Following Videos to Learn More About On-Property Choices!

Hard Rock Hotel and Resort Video Tour: [CLICK HERE](#)

Endless Summer Dockside Inn and Suites Video Tour: [CLICK HERE](#)

Cabana Bay Beach Resort Video Tour: [CLICK HERE](#)



[CLICK HERE TO SEND A MESSAGE](#)



openchampionshipseries.com



Universal Orlando Resort
6000 Universal Boulevard, Orlando, Florida 32819



LODGING PACKAGE PRICING

*Pricing is Per Person

A minimum stay of three nights is required.

All occupants age 3 and up must be listed on reservations, including athletes.

Registered athletes and coaches will receive a \$200 credit off lodging package total.

	EPIC UNIVERSE INCLUDED			WITHOUT EPIC UNIVERSE		
PRICING PER PERSON	CABANA BAY BEACH RESORT	ENDLESS SUMMER DOCKSIDE	HARD ROCK HOTEL	CABANA BAY BEACH RESORT	ENDLESS SUMMER DOCKSIDE	HARD ROCK HOTEL
Dates	April 21-28	April 22 - 28	April 23 - 28	April 21-28	April 22 - 28	April 23 - 28
1 PERSON	\$1,475	\$1,475	\$2,757	\$1,275	\$1,275	\$2,557
2 PERSONS	\$1,010	\$1,010	\$1,711	\$810	\$810	\$1,511
3 PERSONS	\$873	\$873	\$1,368	\$673	\$673	\$1,168
4 PERSONS	\$788	\$788	\$1,157	\$588	\$588	\$957
5 PERSONS	\$847	\$847	NA	\$647	\$647	NA
6 PERSONS	\$797	\$797	NA	\$597	\$597	NA
ADDITIONAL NIGHT	\$309 Per Night	\$309 Per Night	\$659 Per Night	\$309 Per Night	\$309 Per Night	\$659 Per Night

- 3-night minimum hotel stay included in package pricing
- Hotel packages include park tickets with an option to upgrade to Universal Epic Universe:
 - Lodging package with ticket package (including Epic Universe) - Enjoy 5 days to move freely between Universal Studios Florida, Universal Islands of Adventure, Universal Volcano Bay AND Universal Epic Universe. The 5-Day Park-to-Park WITH Volcano Bay Youth Ticket entitles one (1) guest admission to Universal Studios Florida, Universal Islands of Adventure, Universal Epic Universe, AND Universal Volcano Bay theme parks on any five (5) calendar days.
 - Lodging Package with standard park ticket package (without Epic Universe) - Enjoy 5 days to move freely between Universal Studios Florida, Universal Islands of Adventure and Universal Volcano Bay. The 5 Day Park Ticket entitles one (1) guest admission to Universal Studios Florida, Universal Islands of Adventure, AND Universal Volcano Bay theme parks on any five (5) separate calendar days.
- Ticket is valid over a ten (10) consecutive calendar day period (APRIL 21-30, 2026). The ticket will expire in full on the expiration date printed on ticket. Unused days shall be forfeited.
- Includes 2-Day Event Spectator Wristband for all spectators



[CLICK HERE TO SEND A MESSAGE](#)



openchampionshipseries.com



Universal Orlando Resort
6000 Universal Boulevard, Orlando, Florida 32819

CLICK HERE TO BOOK A LODGING PACKAGE!

GUEST PAYMENT DETAILS

- Login into your account at eventconnect.io/login after booking to complete your payment(s)
- All cancellations and modifications must be received by March 9, 2026
- All reservation modifications or cancellations **MUST** be submitted on the Change Request Form - [CLICK HERE](#)
- Do NOT contact the hotel directly to modify or cancel your reservation
- Final payment for lodging package is DUE March 11, 2026.
- If full payment is not received by March 11, 2026, the reservation will be cancelled and any and all deposits received will not be refunded
- Universal Park Ticket packages cannot be removed from Lodging Packages for any reason or situation
- All rooms will require an incidental hold at the time of arrival
- Prevailing discounted self-parking prices for overnight guests and payment will be collected at the hotel
- \$110 NON-REFUNDABLE deposit per room is due at time of booking
- Additional nights will be subject to a \$10 service fee per night, reflected in the deposit

FINAL DATE TO MAKE A CHANGE TO YOUR LODGING PACKAGE: MARCH 9, 2026

Lodging Package Change Requests [CLICK HERE](#)

LODGING PACKAGE PAYMENT FINAL DEADLINE: MARCH 11, 2026



[CLICK HERE TO SEND A MESSAGE](#)



openchampionshipseries.com



Universal Orlando Resort
6000 Universal Boulevard, Orlando, Florida 32819



SPECTATOR ENTRY PACKAGES

This package includes both park admission and access to the competition. Spectator entry into the competition venue cannot be purchased separately.

[CLICK HERE TO PURCHASE SPECTATOR ENTRY PACKAGES!](#)

[CLICK HERE TO UPGRADE ATHLETE/COACH TICKET!](#)

NUMBER OF DAYS/PARKS	PARKS	FRIENDS & FAMILY PRICE
1 DAY/2 PARK (without Epic Universe)	Universal Studios Orlando and Universal Islands of Adventure	\$215

1-Day Park-to-Park Youth Ticket *Does not include Volcano Bay OR Epic Universe*

The 1-Day Park-to-Park Youth Ticket entitles one (1) guest admission to BOTH Universal Studios Florida AND Universal Islands of Adventure theme parks on any one (1) calendar day. Ticket is valid over a ten (10) consecutive calendar day period (APRIL 21-30, 2026) which commences on and includes the date selected. Unused days will be forfeited.

2 DAY/3 PARKS (without Epic Universe)	Universal Studios Orlando, Universal Islands of Adventure, and Universal Volcano Bay	\$350
------------------------------------------	--------------------------------------------------------------------------------------------	-------

2-Day Park-to-Park Youth Ticket *Does not include Epic Universe*

The 2-Day Park-to-Park Youth Ticket entitles one (1) guest admission to Universal Studios Florida, Universal Islands of Adventure, AND Universal Volcano Bay theme parks on any two (2) calendar days. Ticket is valid over a ten (10) consecutive calendar day period (APRIL 21-30, 2026) which commences on and includes the date selected. Unused days will be forfeited.

5 DAY/3 PARKS (without Epic Universe)	Universal Studios Orlando, Universal Islands of Adventure, and Universal Volcano Bay	\$375
------------------------------------------	--------------------------------------------------------------------------------------------	-------

5-Day Park-to-Park Youth Ticket *Does not include Epic Universe*

The 5-Day Park-to-Park Youth Ticket entitles one (1) guest admission to Universal Studios Florida, Universal Islands of Adventure, AND Universal Volcano Bay theme parks on any five (5) calendar days. Ticket is valid over a ten (10) consecutive calendar day period (APRIL 21-30, 2026) which commences on and includes the date selected. Unused days will be forfeited.

3 DAY/3 PARKS (includes Epic Universe)	Universal Studios Orlando, Universal Islands of Adventure, and Universal Epic Universe	\$425
-------------------------------------------	----------------------------------------------------------------------------------------------	-------

3-Day Park-to-Park Youth Ticket *Does not include Volcano Bay*

The 3-Day Park-to-Park Youth Ticket entitles one (1) guest admission to Universal Studios Florida, Universal Islands of Adventure AND Universal Epic Universe theme parks on any three (3) calendar days. Ticket is valid over a ten (10) consecutive calendar day period (APRIL 21-30, 2026) which commences on and includes the date selected. The ticket will expire in full on the expiration date printed on ticket. Unused days shall be forfeited.

5 DAY/4 PARKS (includes Epic Universe)	Universal Studios Orlando, Universal Islands of Adventure, Universal Volcano Bay, and Universal Epic Universe	\$600
-------------------------------------------	------------------------------------------------------------------------------------------------------------------------	-------

5-Day Park-to-Park WITH Volcano Bay Youth Ticket

The 5-Day Park-to-Park WITH Volcano Bay Youth Ticket entitles one (1) guest admission to Universal Studios Florida, Universal Islands of Adventure, Universal Epic Universe, AND Universal Volcano Bay theme parks on any five (5) calendar days. Ticket is valid over a ten (10) consecutive calendar day period (APRIL 21-30, 2026) which commences on and includes the date selected. The ticket will expire in full on the expiration date printed on the ticket. Unused days shall be forfeited.

ATHLETE & COACH TICKET UPGRADE TO INCLUDE UNIVERSE EPIC UNIVERSE

This upgrade must be completed PRIOR to parents or coaches picking up tickets. Once tickets are picked up, upgrades are NOT available.

5 DAY/4 PARKS (includes Epic Universe)	Universal Studios Orlando, Universal Islands of Adventure, Universal Volcano Bay, and Universal Epic Universe	\$175
-------------------------------------------	------------------------------------------------------------------------------------------------------------------------	-------

5-Day Park-to-Park WITH Volcano Bay Youth Ticket

The 5-Day Park-to-Park WITH Volcano Bay Youth Ticket entitles one (1) guest admission to Universal Studios Florida, Universal Islands of Adventure, Universal Epic Universe, AND Universal Volcano Bay theme parks on any five (5) calendar days. Ticket is valid over a ten (10) consecutive calendar day period (APRIL 21-30, 2026) which commences on and includes the date selected. The ticket will expire in full on the expiration date printed on the ticket. Unused days shall be forfeited.

All tickets will expire in full on the expiration date printed on the ticket. The above Admission Media is non-refundable, non-transferable, and must be used by the same person on all days. Standard entry includes biometric scan. Valid only during normal operating hours. Parks, attractions, or entertainment may: close due to refurbishing, capacity, weather or special events; change operating hours; and otherwise change or be discontinued without notice and without liability to the owners of Universal Orlando Resort ("Universal"). Unless otherwise stated, the above Admission Media specifically excludes admission to separately ticketed events and venues at any of the Universal theme parks and/or City Walk and excludes parking or discounts on food or merchandise. Some City Walk venues require ages 21 or older for admission. Valid Photo ID required. Additional restrictions may apply and benefits are subject to change without notice.



[CLICK HERE TO SEND A MESSAGE](#)



openchampionshipseries.com



Universal Orlando Resort
6000 Universal Boulevard, Orlando, Florida 32819

LODGING PACKAGE PARK TICKET PICK UP INSTRUCTIONS

UNIVERSAL LODGING PACKAGES TICKET PICK UP LOCATIONS

Universal's Cabana Bay Beach Resort Guests
Fun in the Sun Room (second floor above Starbucks)
6550 Adventure Way, Orlando, Florida 32819

Hard Rock Hotel Guests - Pick Up at Cabana Bay Beach Resort

Endless Summer Dockside Inn Guests
Wake Room (across from the fitness center)
7000 Universal Boulevard, Orlando, Florida 32819

PICK UP DATES AND TIMES

- Tuesday, April 21, 2026 - 8:00am - 6:00pm
- Wednesday, April 22, 2026 - 8:00am - 6:00pm
- Thursday, April 23, 2026 - 8:00am - 6:00pm
- Friday, April 24, 2026 - 8:00am - 6:00pm
- Saturday, April 25, 2026 - 7:00am - 5:00pm
- Sunday, April 26, 2026 - 8:00am - 12:00pm *Cabana Bay Only*

WHAT TO BRING

- Adult over 18 with valid ID listed on the account
- Confirmation code from Event Connect
- Invoice must be paid in full



COMMUTER PARK TICKET PICK UP INSTRUCTIONS

PICK UP LOCATION

Universal's Cabana Bay Beach Resort Guests
Fun in the Sun Room (second floor above Starbucks)
6550 Adventure Way, Orlando, Florida 32819

PICK UP DATES AND TIMES

- Tuesday, April 21, 2026 - 8:00am - 6:00pm
- Wednesday, April 22, 2026 - 8:00am - 6:00pm
- Thursday, April 23, 2026 - 8:00am - 6:00pm
- Friday, April 24, 2026 - 8:00am - 6:00pm
- Saturday, April 25, 2026 - 7:00am - 5:00pm
- Sunday, April 26, 2026 - 8:00am - 12:00pm

WHAT TO BRING

- Adult over 18 with valid ID listed on the account
- Confirmation code from Event Connect
- Invoice must be paid in full

IMPORTANT DATES AND DEADLINES

August 21, 2025 - Team Registration Opens - [CLICK HERE](#) to register

August 28, 2025 - Lodging Packages Registration Opens

February 4, 2026 - Ticket Packages Open

March 9, 2026 - Lodging Package Change Request Deadline - [CLICK HERE](#) to submit a change request

March 11, 2026 - Lodging Package Payment Deadline

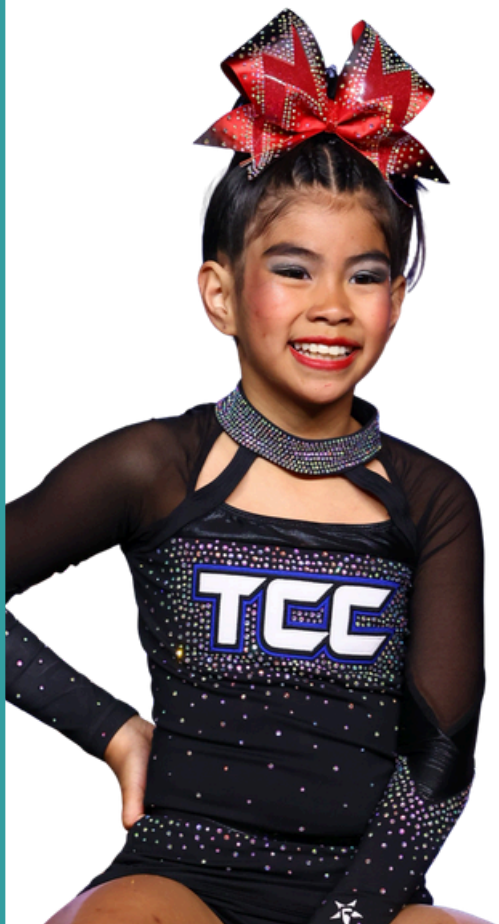
April 1, 2026 - Team Registration Payment Deadline - a late fee of \$10 per athlete will be assessed after this date. *Note: teams can still upgrade to Partial Paid and Paid bids at Open Qualifier events after this date.

April 1, 2026 - Deadline to make roster change requests - a fee of \$250 will be assessed for any roster change requests after this date

April 3, 2026 - Zorts profiles deadline

April 25-26, 2026 - Prep and Rec Grand Nationals event dates

**Please check back to this page for additional deadline dates



[CLICK HERE TO SEND A MESSAGE](#)



openchampionshipseries.com



Universal Orlando Resort
6000 Universal Boulevard, Orlando, Florida 32819

FREQUENTLY ASKED QUESTIONS

TEAM REGISTRATION FAQs

QUESTION: DO I NEED TO MAKE A PAYMENT WHEN I REGISTER MY TEAMS IN REGCHAMP? YES! A \$100/TEAM DEPOSIT IS REQUIRED AT THE TIME OF REGISTRATION TO HOLD YOUR SPOT. ALL DEPOSITS ARE NON-REFUNDABLE. ALL TEAM CANCELLATIONS MUST BE SUBMITTED IN WRITING TWO (2) WEEKS PRIOR TO EVENT DATE ANY CANCELLATIONS MADE AFTER THE EVENT SPECIFIED FINAL PAYMENT DUE DATE ARE NON-REFUNDABLE. CANCELLATIONS WILL NOT BE ACCEPTED, PROCESSED, OR REFUNDED IF A CANCELLATION NOTIFICATION WAS NOT RECEIVED IN THE DESIGNATED TIME PERIOD. ANY TEAM NOT PAID IN FULL 24 HOURS PRIOR TO THE START DATE OF THE EVENT WILL NOT BE ALLOWED TO PARTICIPATE. NO EXCEPTIONS WILL BE MADE.

QUESTION: ARE PARK TICKETS INCLUDED IN ATHLETE AND COACHES REGISTRATION? YES! PARK TICKETS ARE INCLUDED IN ALL REGISTRATION FOR ROSTERED ATHLETES AND COACHES AND STAFF.

QUESTION: IS THIS A ONE OR A TWO DAY EVENT? THIS IS A GUARANTEED TWO-DAY EVENT

QUESTION: DO MY PARENTS OR SPECTATORS HAVE TO PURCHASE SPECTATOR ENTRY PACKAGE THROUGH THE OPEN CHAMPIONSHIP SERIES? YES! PREP AND REC GRAND NATIONALS IS INSIDE OF UNIVERSAL ORLANDO RESORT THEME PARKS. ALL SPECTATORS WHO WISH TO VIEW THE CHEERLEADING EVENT MUST PURCHASE A SPECTATOR ENTRY PACKAGE THROUGH THE OPEN CHAMPIONSHIP SERIES. SPECTATOR BANDS ARE NOT SOLD SEPARATELY (THIS APPLIES TO THOSE WITH SEASON PASSES, THIRD PARTY TICKETS, EMPLOYEE DISCOUNT TICKETS, ETC)

LODGING FAQS

QUESTION: I DON'T SEE MY GYM/PROGRAM NAME. CAN YOU HELP? PROGRAMS/GYMS MUST BE REGISTERED FOR THE EVENT WITH ROSTERS PRIOR TO PARENTS/GUESTS REGISTERING FOR LODGING. PLEASE CHECK WITH YOUR PROGRAM TO ENSURE THAT THEY HAVE REGISTERED FOR THE EVENT AND UPLOADED ROSTERS.

QUESTION: I NEED A WHEELCHAIR ACCESSIBLE OR ADA ROOM. WHERE CAN I NOTATE THAT ON MY ACCOUNT? WHEN CREATING YOUR ACCOUNT, PLEASE ADD THIS INFO TO THE "SPECIAL REQUESTS" SECTION OF YOUR REGISTRATION. PLEASE REMEMBER WE CANNOT GUARANTEE THINGS LIKE ROOMS NEAR SOMEONE ELSE, ADJOINING ROOMS OR YOUR ROOM'S VIEW. THE SPECIAL NOTES SECTION IS ONLY FOR NEEDS AND NOT REQUESTS. IF YOU HAVE ALREADY COMPLETED YOUR REGISTRATION AND NEED TO ADD THIS INFO TO YOUR ACCOUNT, PLEASE SUBMIT A CHANGE REQUEST WITH THIS LINK: [CLICK HERE](#)

QUESTION: WHAT IS THE AGE REQUIREMENT FOR BEING ADDED TO THE LODGING PACKAGE? GUESTS AGES 3 AND UP MUST BE ADDED TO THE PACKAGE TO RECEIVE PARK TICKETS, INCLUDING THE ATHLETE. UNIVERSAL ORLANDO REQUIRES A PARK TICKET FOR CHILDREN 3 AND UP.



[CLICK HERE TO SEND A MESSAGE](#)



openchampionshipseries.com



Universal Orlando Resort
6000 Universal Boulevard, Orlando, Florida 32819

FREQUENTLY ASKED QUESTIONS

PARK TICKET PACKAGE FAQs

QUESTION: ARE PARK TICKETS REQUIRED FOR PARTICIPANTS OR SPECTATORS? YES! THE EVENT IS INSIDE OF UNIVERSAL ORLANDO RESORT THEME PARKS. ATHLETES WILL RECEIVE A PARK TICKET INCLUDED IN THEIR ATHLETE REGISTRATION. ALL SPECTATORS WHO WISH TO VIEW THE EVENT MUST PURCHASE A SPECTATOR ENTRY PACKAGE THROUGH THE OPEN CHAMPIONSHIP SERIES!

QUESTION: ARE CHILD AND ADULT SPECTATOR ENTRY PACKAGE THE SAME PRICE? CHILDREN 5 AND UNDER DO NOT REQUIRE A SPECTATOR BAND INCLUDED IN YOUR SPECTATOR EVENT PACKAGE. HOWEVER, CHILDREN THREE AND UP REQUIRE A UNIVERSAL ORLANDO RESORT PARK PASS.

WHY DO MY TICKETS SAY YOUTH FOR BOTH CHILDREN AND ADULTS? ALL TICKETS ARE THE SAME PRICE AND WILL BE LABELED AS YOUTH TICKETS, AS THEY ARE SOLD FOR OUR YOUTH SPORTING EVENT. THEY ARE VALID FOR ALL ATTENDEES REGARDLESS OF AGE.

QUESTION: ARE PARK TICKETS INCLUDED IN MY ATHLETE REGISTRATION? YES, PARK TICKETS ARE INCLUDED IN ATHLETES REGISTRATION FEE.

QUESTION: ARE PARK TICKETS INCLUDED IN MY LODGING PACKAGE? YES! ALL THOSE STAYING ON THE LODGING PACKAGE DO NOT NEED TO PURCHASE ADDITIONAL PARK TICKETS, AS THEY ARE INCLUDED IN YOUR LODGING PACKAGE. EACH OCCUPANT RECEIVES A 5-DAY PARK TICKET.

QUESTION: WHERE AND WHEN CAN I PICK UP MY PARK TICKETS? GUESTS WILL VISIT OUR ON-SITE OFFICES TO PICK UP PARK TICKETS & SPECTATOR WRISTBANDS. TIMES AND LOCATIONS ARE AVAILABLE IN SECTION 7 OF THIS INFORMATION PACKET.

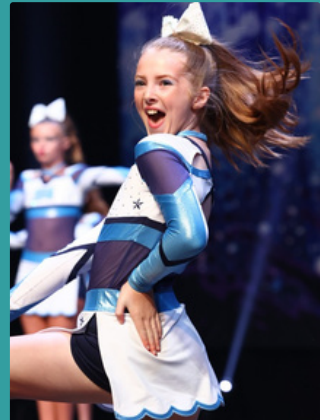
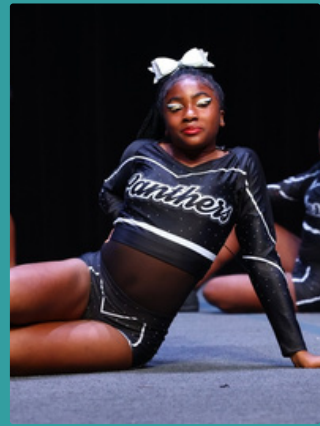
QUESTION: WHAT DATES CAN I USE MY PARK TICKET? TICKET IS VALID OVER A TEN (10) CONSECUTIVE CALENDAR DAY PERIOD (APRIL 21-30, 2026). THE TICKET WILL EXPIRE IN FULL ON THE EXPIRATION DATE PRINTED ON TICKET. UNUSED DAYS SHALL BE FORFEITED.

QUESTION: WILL I GET MY PARK TICKETS WHEN I CHECK IN AT THE FRONT DESK IF I'M STAYING ON A TRAVEL PACKAGE? NO. THE HOTEL FRONT DESK WILL NOT BE DISTRIBUTING THE PARK TICKETS INCLUDED IN YOUR HOTEL TRAVEL PACKAGE. THE OPEN CHAMPIONSHIP WILL HAVE DESIGNATED LOCATIONS AVAILABLE TO VIEW IN THIS INFORMATION PACKET IN SECTION 7.

QUESTION: WILL MY PARK TICKET OR SPECTATOR WRISTBAND BE EMAILED TO ME? NO! PARK TICKETS AND SPECTATOR WRISTBANDS ARE NOT DIGITAL AND WILL NEED TO BE PICKED UP IN PERSON. LODGING PACKAGE OCCUPANTS WILL PICK UP IN ACCORDANCE WITH TICKET PICK UP INSTRUCTIONS IN SECTION 7. ALL OTHER TICKETS WILL BE PICKED UP IN ACCORDANCE WITH TICKET PICK UP INSTRUCTIONS IN SECTION 7.

QUESTION: CAN I BUY ONLY A SPECTATOR BAND? NO, YOU MUST PURCHASE A SPECTATOR ENTRY PACKAGE DIRECTLY THROUGH THE OPEN CHAMPIONSHIP SERIES. THIS PACKAGE INCLUDES BOTH PARK ADMISSION AND ACCESS TO THE COMPETITION. ENTRY TO THE COMPETITION IS NOT PERMITTED WITHOUT A SPECTATOR ENTRY PACKAGE. (THIS APPLIES TO THOSE WITH SEASON PASSES, THIRD PARTY TICKETS, EMPLOYEE DISCOUNT TICKETS, ETC)

QUESTION: CAN I BUY JUST A SPECTATOR BAND IF I ALREADY HAVE UNIVERSAL PARK TICKETS? (SEASON PASSES, THIRD PARTY TICKETS, EMPLOYEE DISCOUNT TICKETS, ETC)? NO, YOU MUST PURCHASE A SPECTATOR ENTRY PACKAGE DIRECTLY THROUGH THE OPEN CHAMPIONSHIP SERIES. THIS PACKAGE INCLUDES BOTH PARK ADMISSION AND ACCESS TO THE COMPETITION. ENTRY TO THE COMPETITION IS NOT PERMITTED WITHOUT A SPECTATOR ENTRY PACKAGE.



[CLICK HERE TO SEND A MESSAGE](#)



openchampionshipseries.com



Universal Orlando Resort
6000 Universal Boulevard, Orlando, Florida 32819

HELPFUL LINKS AND INFORMATION

LIVESTREAM Prep and Rec Grand Nationals will be live streamed for FREE! View the Livestream at the following link: [CLICK HERE](#)

PHOTOGRAPHY Event photos will be available at [RTEVENT.COM](#)

MERCHANDISE Prep and Rec Grand Nationals merchandise and apparel will be available online throughout the season and on-site at the venue.

SCORING RESOURCES LINK: [CLICK HERE](#)

OPEN CHAMPIONSHIP SERIES SCORING PAGE: [CLICK HERE](#)

TEAM ROSTER CHANGE REQUEST FORM: [CLICK HERE](#)

IS THIS LEGAL? FORM: [CLICK HERE](#)

IS THIS LEVEL APPROPRIATE? FORM: [CLICK HERE](#)

BOOK A LODGING PACKAGE: [CLICK HERE](#)

PURCHASE TICKET PACKAGES: [CLICK HERE](#)

LODGING PACKAGE CHANGE REQUEST FORM: [CLICK HERE](#)

DISCLAIMER: CABANA BAY BEACH RESORT TM & © 2025 UCF HOTEL VENTURE II. © 2025 UCF HOTEL VENTURE V. UNIVERSAL TM & © UNIVERSAL STUDIOS. ENDLESS SUMMER REGISTERED TRADEMARKS, BRUCE BROWN FILMS, LLC. AVENTURA HOTEL TM & © 2025 UCF HOTEL VENTURE IV. HARD ROCK HOTEL ® HARD ROCK CAFE INTERNATIONAL (USA), INC. UNIVERSAL ELEMENTS AND ALL RELATED INDICIA TM & © 2025 UNIVERSAL STUDIOS. ALL RIGHTS RESERVED.



[CLICK HERE TO SEND A MESSAGE](#)



openchampionshipseries.com



Universal Orlando Resort
6000 Universal Boulevard, Orlando, Florida 32819



TERMS AND CONDITIONS

Team Cancellation Policy

- A \$100/team deposit is required at the time of registration to hold your spot
- All deposits are non-refundable
- All team cancellations must be submitted in writing two (2) weeks prior to event date
- Any cancellations made after the event specified final payment due date are NON-REFUNDABLE
- Cancellations will not be accepted, processed, or refunded if a cancellation notification was not received in the designated time period

Hotel Cancellation Policy

- \$110 NON-REFUNDABLE deposit per room is due at time of booking. Additional nights will be subject to a \$10 service fee per night, reflected in the deposit
- Cancellations will not be accepted, processed, or refunded after the Change Request Deadline and all deposits are NON-REFUNDABLE
- Any accounts not paid in full by the due date will be canceled and the deposit will remain NON-REFUNDABLE
- The Open Championship Series are not responsible for issues regarding hotel rooms - Issues include but are not limited to mold, pet hair, lout and/or intoxicated people, allergic reactions, bad service, dirty rooms, incorrect information given by hotel employees regarding Open / ASWC events and/or refund policies
- The Open Championship Series is not responsible for incorrect information provided by hotel staff about cancellations/refunds or any hotel information
- All hotel cancellation/refund policies are determined by The Open Championships Series

On Site and Pre-Purchased Universal Studios and Competition Ticket Sale Policy

- All tickets purchased on site are non-refundable
- All tickets pre-purchased online are non-refundable
- Once tickets are purchased they cannot be exchanged
- Unused tickets/days cannot be returned or refunded
- Pre-purchased and on-site spectator entry package sales are non-refundable
- Customer is responsible for all sales tax and ticket processing fees that may be applied by the processing company.
- The Open Championship Series is not responsible for any rides, attractions, or entertainment that may be closed or unavailable at Universal Orlando Resort. All experiences are subject to change at the discretion of Universal and are not guaranteed by the event organizers.
- There are no exceptions to any non-refundable policy
- Universal Studios tickets must be picked up at The Open locations to be designated prior to the events. Tickets will NOT be mailed or emailed. Universal Studios will NOT accept invoices, QR codes, bar codes, etc. Universal Studios will only accept physical tickets that are picked up at The Open designated locations.





TERMS AND CONDITIONS

Inclement Weather Policy

It is rare that OCS cancels an event. However, if OCS cancels an event and it is not rescheduled, your team will receive a FULL refund. In case of inclement weather you can check our website at www.openchampionshipseries.com for weather updates. If the facility is open, the event will go on. Please make any necessary travel arrangements so that you will not have any problems making it to the event on time. No special factors or performance times will be granted to those who arrive late for any reason (weather or otherwise). Furthermore, no refunds will be given on any OCS expenses.

Music Certification

The OCS policy has always been that all teams should comply with the US Copyright and Licensing Laws. By accepting this agreement, you confirm that you have authority to verify that all of your performance music complies with US Copyright and Licensing laws for each team/individual you are registering for the current season.

Privacy Policy

Your privacy is very important to us. Accordingly, we have developed this Policy in order for you to understand how we collect, use, communicate and disclose and make use of personal information. The following outlines our privacy policy:

- We collect personal information for the purpose of registering students and staff for competitions, camps, and classes. If you are entering information for persons other than yourself, you are responsible for obtaining the appropriate consents.
- We will collect and use personal information solely with the objective of fulfilling those purposes specified by us and for other compatible purposes, unless we obtain the consent of the individual concerned or as required by law
- We will protect personal information by reasonable security safeguards against loss or theft, as well as unauthorized access, disclosure, copying, use or modification
- We will make readily available to customers information about our policies and practices relating to the management of personal information
- We are committed to conducting our business in accordance with these principles in order to ensure that the confidentiality of personal information is protected and maintained

Payment Authorization

To the extent permitted by applicable law, you irrevocably and unconditionally authorize The Open Championship Series to charge all amounts due under this agreement to any credit card you provide to us, and you agree to indemnify, defend and hold harmless The Open Championship Series/The Allstar World Championship with respect to the same.

The Open Championship Series reserves the right to contact your program or gym in regards to any unauthorized charge backs.

